

RECEIVED
1 AUG 1990

CATALOGUE NO. 6401.0
EMBARGOED UNTIL 11.30 AM 1 August 1990

CONSUMER PRICE INDEX - JUNE QUARTER 1990

PHONE INQUIRIES

- *about these statistics, copies of publications and other ABS services* - contact Information Services on Canberra (06) 252 5402, 252 6007, 252 6627 or any ABS State office.

- for *more detailed* information about these statistics - contact Ms Maree Roy on Canberra (06) 252 6251 or any ABS State office.

MAIL INQUIRIES

- *write to* Information Services, ABS, P.O. Box 10, Belconnen, A.C.T. 2616 or any ABS State office.

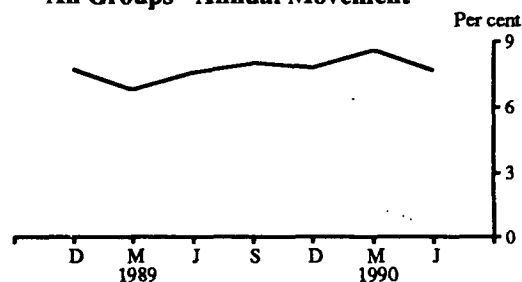
ELECTRONIC SERVICES

- on DISCOVERY - key *656#.
- on AUSSTATS - phone (06) 252 6017.
- on TELESTATS - phone (06) 252 5404 Foreign Trade statistics inquiries, (06) 252 5405 Main Economic Indicator inquiries.

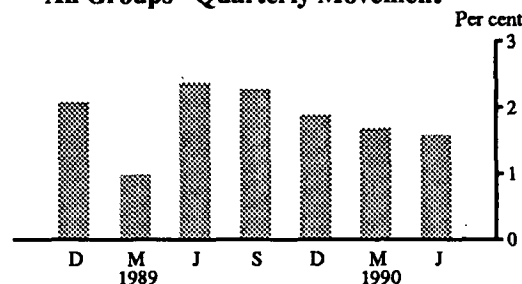
MAIN FEATURES

	Change between	
	Mar. qtr 1990 and June qtr 1990 %	June qtr 1989 and June qtr 1990 %
Weighted average of eight capital cities		
Food	+2.8	+5.8
Clothing	+2.0	+4.4
Housing	+1.6	+13.0
Household equipment and operation	+1.7	+6.4
Transportation	+0.6	+8.0
Tobacco & alcohol	+1.8	+8.6
Health and personal care	+1.5	+7.2
Recreation and education	+1.0	+6.9
All groups	+1.6	+7.7
All groups excluding housing	+1.6	+6.7
All groups excluding food	+1.4	+8.1

All Groups - Annual Movement



All Groups - Quarterly Movement



Increases in food prices had the largest impact on the movement in the all groups index this quarter. This was mainly due to significant increases in fresh vegetable prices. Increases in prices of tomatoes and lettuce contributed most to the national result.

Overview.

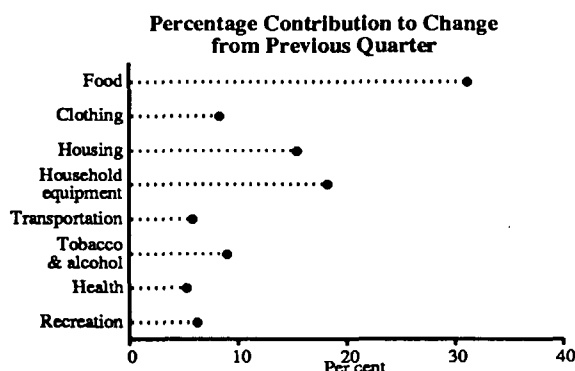
The CPI increased by 1.6% between the March and June quarters and by 7.7% since June quarter last year.

Both the quarterly and annual rates of increase (1.6% and 7.7%) are down on the results recorded in March quarter (1.7% and 8.6%).

The considerably lower rate of increase in transportation costs of 0.6% this quarter, compared with 2.6% last quarter, had a moderating influence on the CPI. The small increase this quarter was mainly due to slight falls in motor vehicle prices and only marginal increases in petrol prices.

Main contributions to change.

Three groups accounted for more than 65% of the increase in the all groups index - Food (31.3%), Household equipment and operations (18.3%) and Housing (15.5%)- see chart below.



Food: +2.8%

The food group is the largest contributor to change in the all groups index, accounting for 31.3% of the change this quarter. Increases in fresh vegetable prices account for 34% of this and meals out and take away foods for a further 20%.

Fresh vegetable prices increased by 23.9% on average this quarter. The largest increases were recorded in Melbourne (29.1%) and Sydney (27.2%) and the smallest increase in Adelaide (9.2%). Increases in prices of tomatoes and lettuce contributed most to the national result.

Meals out and take away food prices increased by 2.2% on average, with increases recorded in all cities. The largest increase was recorded in Melbourne (3.4%) and the smallest in Canberra (0.7%).

Household equipment and operation: +1.7%

This represents the largest increase recorded since September quarter 1987 (1.9%). Household equipment and operation's group contributed 18.3% to the movement in the all groups index, with increases in furniture prices accounting for 36% of this and consumer credit charges for a further 26%.

Furniture prices increased by 3.7% on average, with increased prices recorded in all cities. The largest increase was recorded in Adelaide (6.4%) and the smallest in Hobart (0.6%).

Consumer credit charges increased by 2.9% this quarter, compared with 3.6% last quarter, comprising 1.5% from increases in the value of debt outstanding and 1.4% from increases in interest rates.

Housing: +1.6%

Although this represents a continuation of the trend toward lower rates of increase in housing costs, the housing group still contributed significantly to the change in the all groups index - accounting for 15.5% of the change. Increases in mortgage interest charges account for 42% of this.

The increase in mortgage interest charges this quarter of 1.4% is down significantly on the rate of 3.4% recorded last quarter mainly due to a fall in interest rates (-1.0%). The value of debt outstanding increased by 2.4%.

CONSUMER PRICE INDEX - ALL GROUPS PERCENTAGE CHANGES

	Change between	
	Mar. qtr 1990 and June qtr 1990	June qtr 1989 and June qtr 1990
Sydney	+1.5	+8.1
Melbourne	+1.9	+7.8
Brisbane	+1.4	+6.6
Adelaide	+1.8	+6.7
Perth	+1.7	+8.6
Hobart	+0.9	+6.2
Canberra	+1.0	+6.9
Darwin	+1.8	+6.4
Weighted average of eight capital cities	+1.6	+7.7

Changes over recent years.

An improved approach to the treatment of mortgage interest charges in the CPI was introduced in March quarter 1989. CPI series which included mortgage interest charges (eg Housing group and All groups) were affected by the change. In order to provide the correct basis of comparison for the analysis of changes in prices, the ABS has compiled index number series using the new debt profile approach from the time that mortgage interest charges were first included in the CPI (March quarter 1987). These series together with an explanation of the change in treatment of mortgage interest charges were published in the December quarter 1989 issue of this publication, copies of which are available on request. They also form the basis of the graphs on the following page and the estimates shown in Table 5 of this publication. These series are recommended for the analysis of price change (as distinct from statutory indexation and contract escalation purposes).

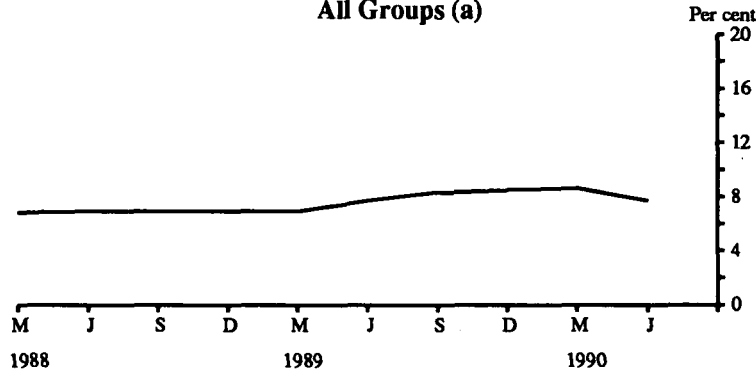
Annual percentage changes (Analytical Series)

1989			1990	
June	Sept	Dec.	Mar.	June
7.7	8.3	8.5	8.6	7.7

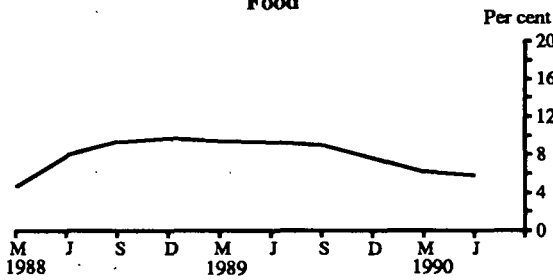
IAN CASTLES
Australian Statistician

**WEIGHTED AVERAGE OF EIGHT CAPITAL CITIES
PERCENTAGE CHANGE ON CORRESPONDING QUARTER OF PREVIOUS YEAR**

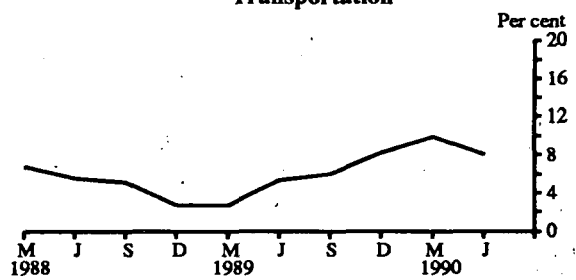
All Groups (a)



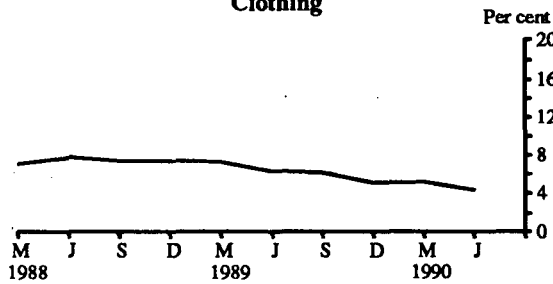
Food



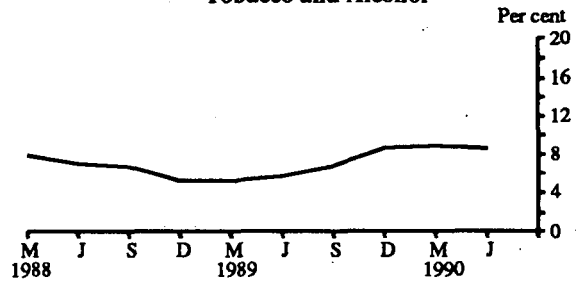
Transportation



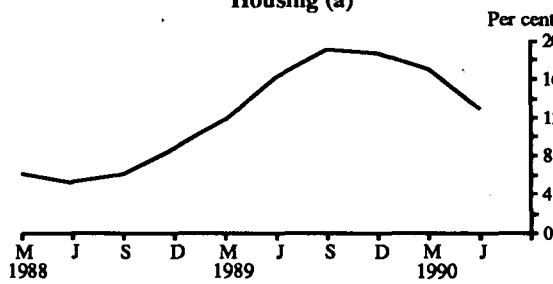
Clothing



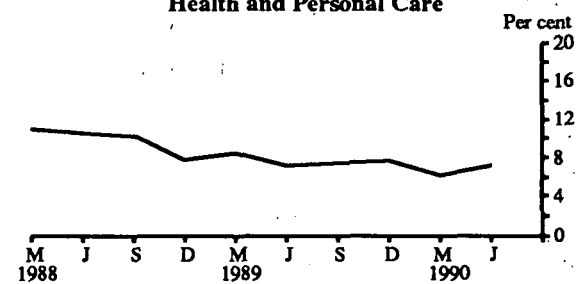
Tobacco and Alcohol



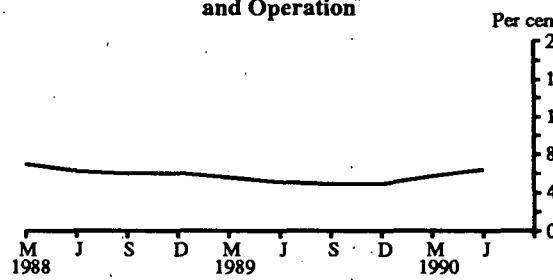
Housing (a)



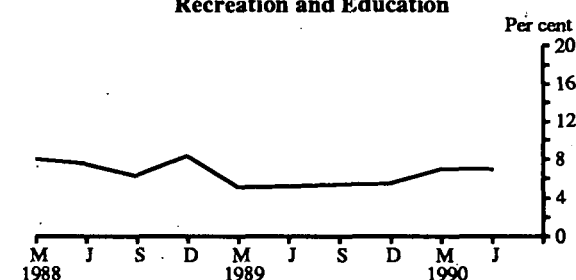
Health and Personal Care



Household Equipment and Operation



Recreation and Education



(a) Analytical series see previous page under *Changes over recent years*.

TABLE 1. CONSUMER PRICE INDEX: ALL GROUPS INDEX NUMBERS
(Base of each index: Year 1980-81 = 100.0)

Period	Sydney	Melbourne	Brisbane	Adelaide	Perth	Hobart	Canberra	Darwin	Weighted average of eight capital cities
1986-87	161.4	163.9	161.8	164.0	161.8	162.5	163.4	159.3	162.6
1987-88	173.7	175.9	173.1	175.0	173.3	174.4	174.7	170.6	174.5
1988-89	187.7	187.9	185.4	187.8	186.1	185.3	186.4 r	178.9	187.3
1989-90	203.0	203.6	199.3	201.2	201.7	198.3	200.2	190.0	202.3
Quarter - 1985-86									
June	152.0	154.2	152.7	154.4	150.8	152.2	155.1	149.4	153.0
1986-87									
September	155.8	158.2	156.4	158.9	155.9	156.3	158.4	153.3	157.0
December	160.1	162.9	160.7	162.9	160.7	161.4	162.3	158.6	161.5
March	163.5	166.0	164.1	165.7	163.8	164.8	165.1	161.4	164.7
June	166.1	168.6	166.1	168.4	166.6	167.3	167.8	163.9	167.2
1987-88									
September	169.0	171.6	168.4	170.5	169.1	170.3	170.0	166.6	170.0
December	171.8	174.5	171.5	173.8	171.8	172.9	173.0	169.5	172.9
March	175.6	177.1	174.6	176.3	174.6	175.8	176.4	171.7	176.0
June	178.3	180.4	177.9	179.2	177.7	178.4	179.5	174.5	179.0
1988-89									
September	182.9	183.0	180.5	182.7	181.3	180.6	181.7	175.6	182.4
December	187.6	186.2	183.7	185.7	185.1	183.5	185.0	177.2	186.2
March	187.8	188.7	186.4	189.5	187.0	186.8	187.2	180.0	188.0
June	192.5	193.8	191.0	193.2	191.0	190.3	191.5	182.9	192.6
1989-90									
September	197.8	198.1	194.5	196.5	195.5	193.6	194.5	185.5	197.0
December	201.4	202.0	197.9	199.6	199.5	197.1	198.8	188.8	200.7
March	204.9	205.1	200.9	202.5	204.1	200.2	202.7	191.2	204.1
June	208.0	209.0	203.7	206.2	207.5	202.1	204.8	194.6	207.4

TABLE 2. CONSUMER PRICE INDEX : ALL GROUPS PERCENTAGE CHANGES.

Period	Sydney	Melbourne	Brisbane	Adelaide	Perth	Hobart	Canberra	Darwin	Weighted average of eight capital cities
Change from previous year									
1987-88	7.6	7.3	7.0	6.7	7.1	7.4	6.9	7.1	7.3
1988-89	8.1	6.8	7.1	7.3	7.4	6.3	6.7 r	4.9	7.3 r
1989-90	8.2	8.4	7.5	7.1	8.4	7.0	7.4	6.2	8.0
Change from corresponding quarter of previous year									
1987-88									
June	7.3	7.0	7.1	6.4	6.7	6.6	7.0	6.5	7.1
1988-89									
September	8.2	6.6	7.2	7.2	7.2	6.0	6.9	5.4	7.3
December	9.2	6.7	7.1	6.8	7.7	6.1	6.9	4.5	7.7
March	6.9	6.5	6.8	7.5	7.1	6.3	6.1	4.8	6.8
June	8.0	7.4	7.4	7.8	7.5	6.7	6.7	4.8	7.6
1989-90									
September	8.1	8.3	7.8	7.6	7.8	7.2	7.0	5.6	8.0
December	7.4	8.5	7.7	7.5	7.8	7.4	7.5	6.5	7.8
March	9.1	8.7	7.8	6.9	9.1	7.2	8.3	6.2	8.6
June	8.1	7.8	6.6	6.7	8.6	6.2	6.9	6.4	7.7
Change from previous quarter									
1987-88									
June	1.5	1.9	1.9	1.6	1.8	1.5	1.8	1.6	1.7
1988-89									
September	2.6	1.4	1.5	2.0	2.0	1.2	1.2	0.6	1.9
December	2.6	1.7	1.8	1.6	2.1	1.6	1.8	0.9	2.1
March	0.1	1.3	1.5	2.0	1.0	1.8	1.2	1.6	1.0
June	2.5	2.7	2.5	2.0	2.1	1.9	2.3	1.6	2.4
1989-90									
September	2.8	2.2	1.8	1.7	2.4	1.7	1.6	1.4	2.3
December	1.8	2.0	1.7	1.6	2.0	1.8	2.2	1.8	1.9
March	1.7	1.5	1.5	1.5	2.3	1.6	2.0	1.3	1.7
June	1.5	1.9	1.4	1.8	1.7	0.9	1.0	1.8	1.6

TABLE 3. CONSUMER PRICE INDEX : CHANGE BETWEEN MARCH QUARTER 1990 AND JUNE QUARTER 1990
MAIN CONTRIBUTIONS TO CHANGE IN TERMS OF ALL GROUPS INDEX POINTS

Item	Sydney	Melbourne	Brisbane	Adelaide	Perth	Hobart	Canberra	Darwin	Weighted average of eight capital cities
FOOD	0.97	1.49	0.79	0.75	0.81	0.52	0.49	0.89	1.04
Cheese	0.03	0.03	0.00	0.02	0.04	0.01	0.04	0.03	0.03
Bread	0.04	0.03	0.00	0.07	-0.05	0.02	0.01	0.04	0.02
Cakes and biscuits	0.07	0.08	0.03	0.02	0.11	0.01	0.05	0.05	0.06
Beef and veal	0.06	0.05	0.05	0.02	0.05	0.02	0.03	0.04	0.05
Lamb and mutton	0.03	0.08	0.03	0.02	0.06	0.01	0.04	0.01	0.04
Fresh fruit	-0.03	0.13	0.00	0.12	0.00	0.06	-0.17	-0.01	0.03
Fresh vegetables	0.45	0.42	0.27	0.12	0.20	0.12	0.26	0.33	0.36
Soft drinks and cordials	0.10	0.05	0.05	0.02	-0.01	0.03	0.02	0.13	0.05
Confectionery	0.01	0.03	0.04	0.03	0.03	0.08	0.02	0.06	0.02
Meals out	0.09	0.21	0.02	0.04	0.10	0.07	0.06	0.02	0.11
Take away foods	0.09	0.14	0.10	0.08	0.11	0.07	0.02	0.07	0.10
CLOTHING	0.33	0.31	0.19	0.12	0.19	0.26	0.36	0.10	0.28
Mens' outer clothing	0.06	0.05	0.02	0.01	0.08	0.02	0.03	0.02	0.05
Boy's clothing	0.04	0.07	0.05	0.02	0.02	0.03	0.05	0.02	0.04
Womens' outer clothing	0.04	0.05	0.02	0.01	0.02	0.03	0.07	0.00	0.03
HOUSING	0.51	0.66	0.39	0.38	0.50	0.24	0.22	0.34	0.52
Privately-owned dwelling rents	0.12	0.12	0.14	0.12	0.06	0.06	0.05	0.05	0.12
Govt-owned dwelling rents	0.00	0.00	0.01	0.00	0.00	0.00	0.00	0.00	0.00
Mortgage interest charges	0.17	0.26	0.17	0.19	0.45	0.11	0.12	0.14	0.22
Local govt rates & charges	0.13	0.19	0.00	0.00	0.00	0.00	0.00	0.00	0.10
House repairs & maintenance	0.08	0.07	0.05	0.09	-0.01	0.04	0.04	0.06	0.07
House insurance	0.01	0.03	0.02	-0.01	0.00	0.01	0.01	0.09	0.02
HOUSEHOLD EQUIP. & OPERATION	0.47	0.60	0.57	0.87	0.94	0.43	0.75	0.69	0.61
Furniture	0.15	0.25	0.09	0.48	0.39	0.03	0.25	0.12	0.22
Kitchen & cooking utensils	0.03	0.03	0.02	0.02	0.03	0.05	0.01	0.04	0.02
Tools	0.02	0.01	0.01	0.04	0.01	-0.02	-0.05	0.04	0.02
Household cleaning agents	0.01	0.04	0.08	0.02	0.07	0.02	0.01	0.11	0.03
Other household non-durables	0.04	0.01	0.02	0.04	0.01	-0.02	0.05	0.06	0.03
Stationery	-0.13	0.02	0.00	0.00	0.00	0.14	0.06	0.02	-0.03
Pet food	0.01	0.02	0.04	0.03	0.07	0.01	0.04	0.06	0.02
Repairs to appliances	0.04	0.04	0.04	0.03	0.02	0.00	0.00	0.04	0.04
Consumer credit charges	0.18	0.12	0.19	0.12	0.21	0.15	0.22	0.19	0.16
TRANSPORTATION	0.19	0.11	0.20	0.44	0.30	-0.29	0.15	0.50	0.19
Motor vehicles	-0.01	-0.06	-0.08	0.04	0.06	-0.02	-0.09	0.12	-0.03
Automotive fuel	0.00	-0.01	-0.02	0.06	0.07	-0.43	0.10	0.14	0.00
Vehicle insurance	0.03	0.06	0.00	0.11	0.03	0.01	0.03	0.04	0.04
Vehicle servicing etc.	0.14	0.11	0.22	0.26	0.13	0.16	0.10	0.20	0.15
TOBACCO & ALCOHOL	0.30	0.25	0.32	0.43	0.34	0.31	0.22	0.50	0.31
Beer	0.13	0.11	0.10	0.09	0.15	0.12	0.11	0.30	0.13
Wine	-0.03	-0.04	0.01	0.10	0.01	-0.01	-0.06	-0.02	-0.02
Spirits	0.07	0.06	0.07	0.16	0.05	0.09	0.06	0.02	0.07
Cigarettes & tobacco	0.12	0.12	0.14	0.09	0.12	0.11	0.09	0.20	0.13
HEALTH & PERSONAL CARE	0.13	0.18	0.13	0.43	0.18	0.19	0.11	0.17	0.17
Hospital & medical services	0.01	0.05	0.02	0.35	0.01	0.09	0.02	0.05	0.05
Dental services	0.06	0.03	0.02	0.03	0.01	0.03	0.05	0.05	0.04
Toiletries & personal products	0.04	0.06	0.09	0.05	0.09	0.08	0.03	0.04	0.06
Hairdressing services	0.04	0.04	0.02	0.00	0.05	0.00	0.02	0.01	0.03
RECREATION & EDUCATION	0.16	0.30	0.24	0.28	0.12	0.26	-0.15	0.24	0.21
Books newspapers & magazines	0.08	0.11	0.14	0.17	0.07	0.04	0.03	0.08	0.10
Video and sound equipment	-0.06	-0.04	-0.04	-0.01	-0.01	-0.01	-0.04	-0.06	-0.04
Sports & photo equip & toys	0.02	0.10	0.00	-0.05	0.00	0.05	-0.06	0.09	0.03
Holiday travel & accom overseas	0.03	0.04	0.04	0.05	0.02	-0.06	0.07	-0.04	0.04
Entertainment	0.09	0.03	0.10	0.04	-0.01	0.22	-0.06	0.04	0.06
Total change	3.1	3.9	2.8	3.7	3.4	1.9	2.1	3.4	3.3
Contribution of selected State & local government charges (a) to total change	0.13	0.19	0.05	-0.06	0.00	0.00	0.00	0.00	0.11

(a) Composition of this category is described in footnote (d) Table 8, page 11.

TABLE 4. CHANGE BETWEEN MARCH QUARTER 1990 AND JUNE QUARTER 1990 (a)
PERCENTAGE CONTRIBUTION TO CHANGE IN WEIGHTED AVERAGE EIGHT CAPITAL CITIES ALL GROUPS INDEX.

	Sydney	Melbourne	Brisbane	Adelaide	Perth	Hobart	Canberra	Darwin	Weighted average of eight capital cities
Food	10.2	13.1	2.6	2.0	2.4	0.3	0.5	0.3	31.3
Clothing	3.5	2.7	0.6	0.3	0.5	0.1	0.3	0.0	8.3
Housing	5.4	5.9	1.3	1.0	1.5	0.1	0.2	0.1	15.5
Household equipment and operation	5.0	5.3	1.9	2.3	2.8	0.2	0.7	0.2	18.3
Transportation	2.0	1.0	0.7	1.2	0.9	-0.1	0.1	0.1	5.9
Tobacco and alcohol	3.2	2.2	1.1	1.2	1.0	0.2	0.2	0.1	9.1
Health and personal care	1.3	1.6	0.4	1.2	0.6	0.1	0.1	0.1	5.3
Recreation and education	1.8	2.6	0.8	0.8	0.3	0.1	-0.1	0.1	6.3
All groups	32.4	34.3	9.4	9.9	10.0	0.9	2.0	1.0	100.0

(a) Table 4 shows the percentage contribution of Groups in each city to the change (between March quarter 1990 and June quarter 1990) in the All Groups index for the weighted average of the eight capital cities.

ANALYTICAL SERIES (a)

TABLE 5. DEBT PROFILE METHOD - WEIGHTED AVERAGE OF EIGHT CAPITAL CITIES: PERCENTAGE CHANGES

Period	Food	Clothing	Housing	Household equipment and operation	Transportation	Tobacco and alcohol	Health and personal care	Recreation and education	All Groups
Change from previous year									
1987-88	5.2	7.8	6.9	6.9	7.8	8.4	11.3	7.8	7.3
1988-89	9.4	7.1	10.8	5.7	3.9	5.7	8.4	6.2	7.1
1989-90	7.1	5.2	15.0	5.5	8.0	8.3	7.2	6.2	8.0
Change from corresponding quarter of previous year									
1987-88- June	7.9	7.8	5.3	6.3	5.5	7.0	10.6	7.5	6.9
1988-89- September	9.3	7.4	6.1	6.0	5.1	6.7	10.3	6.3	6.9
December	9.7	7.4	8.8	6.1	2.7	5.2	7.8	8.3	6.9
March	9.4	7.3	11.8	5.6	2.7	5.2	8.5	5.1	6.9
June	9.3	6.3	16.2	5.1	5.3	5.7	7.2	5.2	7.7
1989-90- September	9.0	6.1	19.1	4.9	6.0	6.8	7.5	5.4	8.3
December	7.6	5.1	18.7	4.9	8.2	8.7	7.7	5.5	8.5
March	6.2	5.2	17.0	5.7	9.9	8.9	6.2	7.0	8.6
June	5.8	4.4	13.0	6.4	8.0	8.6	7.2	6.9	7.7
Change from previous quarter									
1987-88- June	3.3	3.8	1.2	1.6	-0.2	1.6	1.7	1.0	1.6
1988-89- September	2.8	0.4	2.8	1.6	1.5	1.3	0.8	0.8	1.7
December	1.6	3.0	3.8	1.6	0.3	0.2	0.5	2.4	1.7
March	1.5	-0.1	3.5	0.7	1.0	2.0	5.3	0.8	1.6
June	3.2	2.8	5.3	1.0	2.4	2.1	0.5	1.1	2.4
1989-90- September	2.5	0.2	5.4	1.5	2.2	2.3	1.0	1.0	2.3
December	0.3	2.0	3.4	1.5	2.4	2.0	0.7	2.5	1.9
March	0.2	0.1	2.0	1.5	2.6	2.2	3.8	2.3	1.7
June	2.8	2.0	1.6	1.7	0.6	1.8	1.5	1.0	1.6

(a) This table is intended to assist in the analysis of price change (as distinct from movements in the CPI) and is therefore based on indexes calculated using the debt profile method of measuring mortgage interest charges from March quarter 1987.

TABLE 6. CONSUMER PRICE INDEX - GROUP INDEXES

Period	Sydney	Melbourne	Brisbane	Adelaide	Perth	Hobart	Canberra	Darwin	Weighted average of eight capital cities
FOOD (Base of each index : Year 1980-81 = 100.0)									
1987-88- June	168.2	174.0	168.6	170.0	172.0	173.9	163.0	163.8	170.4
1988-89- September	172.3	179.5	172.3	176.0	176.6	178.1	167.8	167.2	175.1
December	176.0	182.3	173.9	177.4	178.7	180.6	170.7	168.1	177.9
March	178.4	183.9	177.6	180.4	183.8	181.9	172.8	171.8	180.5
June	184.5	190.8	183.8	185.6	185.7	185.2	176.6	175.2	186.2
1989-90- September	189.4	196.6	186.8	189.5	188.4	188.8	180.8	176.7	190.8
December	189.4	198.1	185.8	188.4	190.6	192.1	183.2	178.6	191.4
March	191.4	195.4	187.5	186.8	194.0	192.1	185.3	177.7	191.7
June	196.3	202.8	191.6	190.7	198.2	194.9	187.9	182.3	197.0
CLOTHING (Base of each index : Year 1980-81 = 100.0)									
1987-88- June	169.2	170.3	169.8	173.1	171.9	167.7	170.7	153.5	170.1
1988-89- September	169.4	171.2	170.7	174.5	172.2	168.6	171.6	152.7	170.8
December	174.0	177.5	175.6	180.3	177.6	173.2	175.9	156.7	176.0
March	173.9	177.3	175.6	180.2	177.0	173.1	175.1	157.6	175.9
June	179.2	181.1	180.0	186.2	182.7	178.3	180.9	159.8	180.8
1989-90- September	179.6	182.3	179.7	186.6	181.5	178.5	181.7	159.2	181.2
December	182.8	186.4	184.7	188.7	186.4	182.3	185.7	161.2	184.9
March	182.7	186.9	183.6	190.1	185.8	183.5	185.0	161.9	185.0
June	186.9	191.0	186.6	191.9	188.6	186.9	190.2	164.3	188.7
HOUSING (a) (Base of each index : Year 1980-81 = 100.0)									
1987-88- June	182.5	189.1	167.8	175.8	166.0	165.0	183.7	164.1	180.8
1988-89- September	193.2	193.7	171.5	180.0	175.2	167.2	189.0	161.8	188.0
December	208.1	204.5	180.0	185.0	188.2	173.5	196.1	164.3	199.7
March	199.7	207.3	179.0	197.2	182.1	179.9	201.9	168.9	197.7
June	210.8	218.9	186.6	204.3	193.4	186.1	210.7	174.4	208.1
1989-90- September	222.3	230.9	195.7	212.6	206.6	193.5	220.0	180.1	219.3
December	230.6	237.2	202.4	219.0	215.1	200.0	229.6	185.5	226.8
March	234.5	242.6	205.4	223.4	222.6	203.0	233.0	188.3	231.4
June	237.8	248.0	208.3	226.5	225.8	204.8	234.8	190.4	235.1
HOUSEHOLD EQUIPMENT AND OPERATION (Base of each index : Year 1980-81 = 100.0)									
1987-88- June	174.4	176.8	179.7	176.8	174.6	175.8	173.7	174.6	176.1
1988-89- September	178.6	178.6	182.1	180.1	177.1	178.2	175.3	176.3	179.0
December	181.2	181.1	186.1	182.5	180.3	180.9	178.7	178.0	181.8
March	182.2	182.3	186.9	184.0	182.9	183.2	180.4	179.1	183.1
June	183.6	185.0	188.9	185.4	185.2	185.5	182.6	180.5	185.0
1989-90- September	186.1	188.1	191.2	187.5	188.6	187.7	185.3	182.6	187.8
December	188.3	192.2	195.0	191.1	189.5	190.4	188.2	184.5	190.7
March	191.4	195.5	196.4	193.5	192.6	192.3	190.6	185.7	193.5
June	193.9	198.8	199.5	197.8	197.6	194.6	194.4	189.5	196.8

(a) These series have been affected by the adoption of a new approach to the treatment of mortgage interest charges.

TABLE 6. CONSUMER PRICE INDEX - GROUP INDEXES - *continued*

Period	Sydney	Melbourne	Brisbane	Adelaide	Perth	Hobart	Canberra	Darwin	Weighted average of eight capital cities
TRANSPORTATION (Base of each index : Year 1980-81 = 100.0)									
1987-88- June	192.1	180.8	192.2	191.4	187.9	193.7	194.0	189.9	188.2
1988-89- September	198.5	181.1	195.2	195.2	188.1	195.4	192.8	189.8	191.1
December	198.6	181.3	195.2	199.6	188.4	196.9	193.7	190.8	191.7
March	199.3	184.5	196.4	201.6	192.0	199.5	193.3	192.3	193.6
June	203.6	189.0	201.3	204.9	196.9	204.1	200.4	195.6	198.2
1989-90- September	212.8	190.6	205.4	205.8	200.4	206.7	198.7	197.8	202.5
December	218.9	195.4	209.9	210.5	203.1	208.5	204.4	199.9	207.4
March	224.8	200.4	214.9	215.6	207.7	212.8	212.0	202.2	212.7
June	226.1	201.1	216.1	218.3	209.6	211.0	212.9	205.3	214.0
TOBACCO AND ALCOHOL (Base of each index : Year 1980-81 = 100.0)									
1987-88- June	207.3	199.1	192.0	200.6	208.0	218.1	205.4	211.2	203.0
1988-89- September	209.1	201.9	195.0	205.2	210.8	220.3	207.4	214.5	205.6
December	208.8	201.9	198.5	206.9	210.5	223.3	206.1	213.5	206.0
March	211.1	204.8	212.6	210.9	213.0	229.7	209.1	216.7	210.1
June	215.3	209.8	217.3	215.8	217.3	233.3	213.7	217.9	214.6
1989-90- September	220.7	214.7	221.6	221.2	222.2	237.0	217.7	220.5	219.6
December	225.1	219.5	224.2	223.5	229.1	239.9	222.0	226.4	223.9
March	229.1	224.6	229.9	228.5	236.4	244.6	226.8	230.0	228.9
June	233.1	228.2	234.3	234.0	240.9	249.1	230.1	235.1	233.0
HEALTH AND PERSONAL CARE (Base of each index : Year 1980-81 = 100.0)									
1987-88- June	170.1	190.8	175.6	180.8	181.8	160.4	178.2	173.3	179.2
1988-89- September	170.8	192.6	175.7	182.8	186.3	159.7	179.8	173.7	180.6
December	172.8	192.6	176.4	182.7	187.1	159.7	181.3	175.1	181.5
March	181.9	203.7	187.2	190.8	193.9	168.4	188.7	187.0	191.1
June	182.2	205.0	189.1	191.6	195.7	170.6	189.5	188.7	192.1
1989-90- September	183.7	207.2	189.3	196.0	199.2	171.3	192.4	190.4	194.1
December	184.2	206.7	191.4	201.7	204.1	174.2	195.5	196.4	195.5
March	191.6	213.8	199.6	209.4	212.2	185.8	198.6	211.8	203.0
June	193.7	216.8	201.8	216.3	215.8	188.7	200.7	215.7	206.0
RECREATION AND EDUCATION (Base of each index : March Quarter 1982 = 100.0)									
1987-88- June	153.8	160.4	159.7	158.6	150.0	161.3	160.7	148.1	156.9
1988-89- September	155.8	161.1	160.3	158.3	152.3	162.8	162.2	149.5	158.1
December	161.2	163.7	163.5	161.6	155.2	165.0	167.5	152.5	161.9
March	161.9	165.4	164.4	163.3	157.4	167.6	169.1	153.1	163.2
June	163.5	167.9	167.3	165.2	156.6	168.2	169.4	155.1	165.0
1989-90- September	165.0	169.4	168.7	166.9	158.8	171.8	172.0	158.0	166.6
December	169.2	174.0	173.3	170.1	162.8	175.6	174.3	161.8	170.8
March	172.3	179.3	175.6	173.0	167.0	179.1	180.2	164.8	174.7
June	173.8	181.5	177.5	175.3	167.8	181.0	179.1	166.5	176.4

TABLE 7. CONSUMER PRICE INDEX - GROUPS, SUB-GROUPS AND SELECTED EXPENDITURE CLASSES : WEIGHTED AVERAGE OF EIGHT CAPITAL CITIES

Group, Sub-group and Expenditure class	Index numbers (Base of each index: Year 1980-81 = 100.0)				Percentage Change between		Contribution to total CPI (expressed as All Groups index points)			
	Jun 1989	Mar 1990	Jun 1990	Mar qtr 1990 and Jun qtr 1990	Jun qtr 1989 and Jun qtr 1990	Mar 1990	Jun 1990	Mar qtr 1990 and Jun qtr 1990	Jun qtr 1990	
FOOD	186.2	191.7	197.0	2.8	5.8	37.73	38.77	1.04		
Dairy products	174.6	184.4	187.8	1.8	7.6	3.06	3.11	0.05		
Cereal products	201.7	214.7	219.6	2.3	8.9	4.01	4.10	0.09		
Meat and seafoods	160.9	165.3	167.3	1.2	4.0	7.03	7.11	0.08		
Beef and veal	167.8	173.6	177.7	2.4	5.9				0.05	
Lamb and mutton	155.1	157.6	164.5	4.4	6.1		2.01	1.00	0.04	
Pork	160.4	167.0	166.4	-0.4	3.7		0.96	0.35	0.00	
Poultry	151.0	151.6	151.4	-0.1	0.3		0.35	0.75	0.00	
Bacon and ham	139.2	145.6	146.6	0.7	5.3		0.64	0.65	0.01	
Processed meat	151.0	161.5	162.5	0.6	7.6		1.36	1.37	0.01	
Fish	221.4	214.7	210.9	-1.8	-4.7		0.94	0.93	-0.01	
Fresh fruit and vegetables	229.8	198.1	220.7	11.4	-4.0	3.47	3.87	0.40		
Processed fruit and vegetables	193.5	205.0	211.5	3.2	9.3	1.78	1.84	0.06		
Soft drinks - ice cream & conf.	198.9	212.1	215.6	1.7	8.4	5.66	5.76	0.10		
Meals out and take away foods	198.0	208.3	212.9	2.2	7.5	9.47	9.68	0.21		
Other food	171.5	178.7	181.7	1.7	5.9	3.24	3.29	0.05		
CLOTHING	180.8	185.0	188.7	2.0	4.4	13.53	13.81	0.28		
Men's and boys' clothing	173.4	176.0	182.5	3.7	5.2	3.78	3.92	0.14		
Women's and girls' clothing	183.1	188.8	191.8	1.6	4.8	6.21	6.30	0.09		
Fabrics and knitting wool	187.9	192.0	191.7	-0.2	2.0	0.93	0.93	0.00		
Footwear	180.8	181.8	183.5	0.9	1.5	2.10	2.12	0.02		
Dry cleaning and shoe repairs	199.0	212.8	220.6	3.7	10.9	0.52	0.54	0.02		
HOUSING	208.1	231.4	235.1	1.6	13.0	32.22	32.74	0.52		
Rents	217.2	228.0	230.7	1.2	6.2	9.70	9.82	0.12		
Privately-owned dwelling rents	213.9	224.5	227.4	1.3	6.3				0.12	
Government-owned dwelling rents	243.4	255.3	255.6	0.1	5.0	8.83	8.95	0.00		
Home ownership	204.4	233.2	237.4	1.8	16.1	22.52	22.92	0.40		
Mortgage interest charges(a)	133.9	158.8	161.1	1.4	20.3		15.29	15.51	0.22	
Local govt. rates & charges	205.4	220.5	226.8	2.9	10.4		3.60	3.70	0.10	
House repairs and maintenance	179.7	186.4	190.7	2.3	6.1		2.84	2.91	0.07	
House insurance	190.2	197.9	201.2	1.7	5.8		0.79	0.81	0.02	
HOUSEHOLD EQUIPMENT AND OPERATION	185.0	193.5	196.8	1.7	6.4	35.93	36.54	0.61		
Fuel and light	201.6	210.1	210.4	0.1	4.4	4.58	4.59	0.01		
Furniture and floor coverings	187.7	198.3	204.1	2.9	8.7	8.20	8.44	0.24		
Appliances	141.3	145.0	145.3	0.2	2.8	2.81	2.82	0.01		
Household textiles	181.1	189.2	193.1	2.1	6.6	1.35	1.38	0.03		
Household utensils and tools	202.1	207.9	210.9	1.4	4.4	3.45	3.50	0.05		
Household supplies and services	190.7	195.3	198.4	1.6	4.0	7.49	7.61	0.12		
Postal and telephone services	157.2	159.0	159.1	0.1	1.2	2.61	2.61	0.00		
Consumer credit charges (a)	121.6	134.7	138.6	2.9	14.0	5.44	5.60	0.16		

For footnotes see page 10.

TABLE 7. CONSUMER PRICE INDEX - GROUPS, SUB-GROUPS AND SELECTED EXPENDITURE CLASSES : WEIGHTED AVERAGE OF EIGHT CAPITAL CITIES - continued

Group, Sub-group and Expenditure class	Index numbers (Base of each index: Year 1980-81=100.0)				Percentage Change between		Contribution to total CPI (expressed as All Groups index points)				Change between Mar qtr 1990 and Jun qtr 1990	
	Jun qtr 1989	Mar qtr 1990	Jun qtr 1990	Jun qtr 1990	Mar qtr 1990 and Jun qtr 1990	Jun qtr 1989 and Jun qtr 1990	Mar qtr 1990	Jun qtr 1990	Jun qtr 1990			
TRANSPORTATION												
Private motoring	198.2	212.7	214.0	214.0	0.6	8.0	34.03	34.22	34.22	0.19	0.19	
Motor vehicles	196.2	210.5	211.7	211.7	0.6	7.9	32.02	32.21	32.21	0.19	0.19	
Automotive fuel	221.0	229.6	229.1	229.1	-0.2	3.7	11.52	11.49	11.49	-0.03	-0.03	
Vehicle insurance	165.7	187.6	187.8	187.8	0.1	13.3	8.93	8.93	8.93	0.00	0.00	
Motoring charges	234.6	259.4	262.0	262.0	1.0	11.7	4.34	4.38	4.38	0.04	0.04	
Tyres and tubes	188.8	193.3	193.7	193.7	0.2	2.6	1.54	1.54	1.54	0.00	0.00	
Vehicle serv. repairs & parts	161.8	165.6	167.9	167.9	1.4	3.8	0.45	0.46	0.46	0.01	0.01	
Urban transport fares	194.5	203.8	209.6	209.6	2.8	7.8	5.25	5.40	5.40	0.15	0.15	
	216.6	234.9	236.1	236.1	0.5	9.0	2.00	2.01	2.01	0.01	0.01	
TOBACCO AND ALCOHOL												
Alcoholic drinks	214.6	228.9	233.0	233.0	1.8	8.6	16.76	17.07	17.07	0.31	0.31	
Beer	197.6	207.7	210.9	210.9	1.5	6.7	11.81	11.99	11.99	0.18	0.18	
Wine	201.1	213.7	217.5	217.5	1.8	8.2	7.05	7.18	7.18	0.13	0.13	
Spirits	173.8	175.9	174.7	174.7	-0.7	0.5	2.35	2.33	2.33	-0.02	-0.02	
Cigarettes and tobacco	200.2	211.9	218.4	218.4	3.1	9.1	2.41	2.48	2.48	0.07	0.07	
	260.2	287.5	294.6	294.6	2.5	13.2	4.95	5.08	5.08	0.13	0.13	
HEALTH AND PERSONAL CARE												
Health services	192.1	203.0	206.0	206.0	1.5	7.2	11.95	12.12	12.12	0.17	0.17	
Personal care products	186.1	196.3	199.0	199.0	1.4	6.9	6.85	6.95	6.95	0.10	0.10	
Hairstressing services	200.4	212.1	214.7	214.7	1.2	7.1	3.77	3.81	3.81	0.04	0.04	
	188.9	201.4	206.4	206.4	2.5	9.3	1.33	1.36	1.36	0.03	0.03	
RECREATION AND EDUCATION(b)												
Books - newspapers and magazines	165.0	174.7	176.4	176.4	1.0	6.9	21.91	22.12	22.12	0.21	0.21	
Holiday travel and accomm.(b)	226.3	233.7	243.0	243.0	4.0	7.4	2.47	2.57	2.57	0.10	0.10	
Recreational goods	124.5	124.7	124.6	124.6	-0.1	0.1	4.91	4.90	4.90	-0.01	-0.01	
Recreational services	171.4	185.3	186.3	186.3	0.5	8.7	6.55	6.58	6.58	0.03	0.03	
Education and child care(b)	204.5	217.4	220.5	220.5	1.4	7.8	4.88	4.95	4.95	0.07	0.07	
	205.7	232.5	233.5	233.5	0.4	13.5	3.11	3.12	3.12	0.01	0.01	
ALL GROUPS	192.6	204.1	207.4	207.4	1.6	7.7	204.1	207.4	207.4	3.3	3.3	

(a) Base : December quarter 1986 = 100.0. (b) Base : March quarter 1982 = 100.0.

TABLE 8. CONSUMER PRICE INDEX - SPECIAL SERIES : WEIGHTED AVERAGE OF EIGHT CAPITAL CITIES

	Index numbers (Base of each index: Year 1980-81=100.0)				Percentage Change between		Contribution to total CPI (expressed as All Groups index points)		Change between Mar qtr 1990 and Jun qtr 1990
	Jun qtr 1989	Mar qtr 1990	Jun qtr 1990	Jun qtr 1990	Mar qtr 1990 and Jun qtr 1990	Jun qtr 1989 and Jun qtr 1990	Mar qtr 1990	Jun qtr 1990	
ALL GROUPS	192.6	204.1	207.4	207.4	1.6	7.7	204.1	207.4	3.3
SPECIAL SERIES									
All groups - excluding food	194.4	207.4	210.2	210.2	1.4	8.1	166.33	168.62	2.29
All groups - excluding housing	190.1	199.7	202.9	202.9	1.6	6.7	171.84	174.65	2.81
All groups - excl. home ownership	191.4	201.0	204.2	204.2	1.6	6.7	181.54	184.46	2.92
Mortgage interest and consumer credit charges (a)	130.3	151.7	154.5	154.5	1.8	18.6	20.73	21.11	0.38
All groups excl. mortgage int. and consumer credit charges (a)	118.3	124.0	126.0	126.0	1.6	6.5	183.33	186.28	2.95
All groups-excluding hospital & medical services	193.2	204.7	208.1	208.1	1.7	7.7	199.13	202.40	3.27
All groups - goods component (b)	187.4	195.2	198.5	198.5	1.7	5.9	126.64	128.77	2.13
All groups-services comp. (c)	204.4	222.8	226.2	226.2	1.5	10.7	77.42	78.62	1.20
Selected State and local govt. charges (d)	220.5	233.6	235.5	235.5	0.8	6.8	12.15	12.26	0.11
All groups - excl. selected State and local govt. charges (d)	190.5	201.9	205.3	205.3	1.7	7.8	191.91	195.13	3.22

(a) Base : December quarter 1986 = 100.0. (b) The special series 'All groups, goods component' comprises the Food group (except meals out); Clothing group (except dry cleaning and shoe repairs); Household equipment and operation group (except veterinary services, house contents insurance, repairs to appliances, postal and telephone services and consumer credit charges); Tobacco and alcohol group; materials used in house repairs and maintenance; motor vehicles; automotive fuel; tyres and tubes; parts used in vehicle service and repairs; personal care products; books, newspapers and magazines; and recreational goods. (c) The 'All groups, services component' comprises all items not included in the 'All groups, goods component'. (d) Selected State and local government charges comprise: government-owned dwelling rent; water and sewerage rates; council property rates and charges; electricity prices; gas prices (Melbourne and Perth only); motor vehicle third party insurance premiums (except Canberra and in part only in Sydney and Brisbane); motor vehicle registration fees; drivers' licence fees; urban bus fares (government bus fares only in Sydney and Melbourne, council fares only in Brisbane); urban rail and tram fares (not applicable in Hobart, Canberra and Darwin). The derivations and limitations of these figures was described in the Appendix to the December quarter 1982 issue of this publication.

EXPLANATORY NOTES

Brief description of the CPI

1. The CPI measures quarterly changes in the price of a *basket* of goods and services which account for a high proportion of expenditure by the CPI population group (ie metropolitan wage and salary earner households). This *basket* covers a wide range of goods and services, arranged in the following eight groups: food; clothing; housing; household equipment and operation; transportation; tobacco and alcohol; health and personal care; and recreation and education. Pensioners and other social welfare recipients are not included in the CPI population group and the index does not reflect concessional prices paid by these people such as subsidised government dwelling rents, public transport fares and the like.

2. The capital city indexes measure price movements over time in each city individually. They do not measure differences in retail price levels between cities.

3. Further information about the CPI is contained in a booklet entitled *A Guide to the Consumer Price Index* (6440.0) which is available from the ABS on request. A more detailed account is contained in *The Australian Consumer Price Index, Concepts, Sources and Methods* (6461.0).

Prices

4. Prices of goods and services included in the CPI are generally collected quarterly. However, some important items are priced monthly or more frequently (e.g. bread, fresh meat and fish, fresh fruit and vegetables, petrol, alcohol and tobacco) and a small number annually (e.g. seasonal clothing, local government rates and charges).

5. In order to facilitate a more even spread of field collection workload the bulk of the items for which prices are collected quarterly are priced in the first two months of each quarter (ie July/August, October/November, January/February, April/May). With a few exceptions items priced in the third month are those subject to price changes at discrete points of time (e.g. electricity and postal charges, milk); in these cases information about any changes in price during the quarter is obtained so that an average price for the whole quarter can be calculated.

Weighting pattern

6. There are 107 expenditure classes (that is, groupings of like items) in the eleventh series CPI and each expenditure class has its own weight, or measure of relative importance. In calculating the index, price changes for the various expenditure classes are combined using these weights.

7. Changes in the weighting pattern have been made at approximately five-yearly intervals to take account of changes in household spending patterns. The CPI now comprises eleven series of price indexes which have been linked to form a continuous series.

Analysis of CPI changes

8. Movements in indexes from one period to another can be expressed either as changes in *index points* or as percentage changes. The following example illustrates the method of calculating index points changes and percentage changes between any two periods:

All Groups CPI: Weighted average of eight capital cities

Index numbers:

Mar. quarter 1990: 204.1 (see Table 1)

less: Dec. quarter 1989: 200.7 (see Table 1)

Change in index points: +3.4

$$\text{Percentage change} = \frac{+3.4}{200.7} \times 100 = +1.7\%$$

9. In this publication, percentage changes are calculated to illustrate 3 different kinds of movements in index numbers:

- movements between consecutive financial years (where the index numbers for financial years are simple averages of the quarterly index numbers),
- movements between corresponding quarters of consecutive years, and
- movements between consecutive quarters.

10. Table 7 provides a detailed analysis, for the weighted average of eight capital cities, of movements in the CPI since the previous quarter, including information on movements for subgroups and for selected expenditure classes. It also shows the contribution which each group and subgroup makes to the total CPI. For instance, the dairy products subgroup contributed 2.91 index points to the total All Groups index number of 197.0 for September quarter 1989. The final column shows contributions to the change in All Groups index points by each group and subgroup.

11. Table 8 provides summary information about a range of Special series in a similar format to that provided in Table 7.

12. Information on the impact of changes in Selected State and local government charges on the CPI is included in Tables 3 and 8. Table 3 shows the contribution made by changes in these charges to the CPI for each capital city, while Table 8 shows index numbers for two special series *Selected State and local government charges* and *All Groups excluding selected State and local government charges*. An explanation of the derivation and limitations of these figures was published in the Appendix to the December quarter 1982 issue of this publication.

Related publications

13. Users may also wish to refer to the following publications which are available on request:

The Australian Consumer Price Index: Concepts Sources and Methods (6461.0)

A Guide to the Consumer Price Index (6440.0)

Information Paper: The Australian Consumer Price Index: Treatment of Mortgage Interest Charges (6442.0)

House Price Indexes: Eight Capital Cities (6416.0)

Average Retail Prices of Selected Items Eight Capital Cities (6403.0)

Next issue

14. The Consumer Price Index - September quarter 1990 (6401.0) is scheduled to be released on Wednesday 7 November 1990.

Symbols and other usages

n.a. not available

r revised

NOTE. Any discrepancies between totals and sums of components in this publication are due to rounding. For similar reasons quarterly movements shown by subgroup or group index numbers in Table 7 do not necessarily correspond exactly with those shown by the relevant index points.

Electronic services

DISCOVERY Key *656# for selected current economic, (VIATEL). social and demographic statistics.

AUSSTATS. Thousands of up-to-date time series are available on this ABS on-line service through PAXUS COMNET. For further information phone the AUSSTATS Help Desk on (06) 252 6017.

TELESTATS. This service provides:

- foreign trade statistics tailored to users' requirements. Further information is available on (06) 252 5404.
- text and tables for selected Main Economic Indicator publications. Further information is available on (06) 252 5405.

Floppy disk service

Selected ABS statistics are available on floppy disk. Further information is available on (06) 252 6684.

15. Current publications produced by the ABS are listed in the *Catalogue of Publications and Products, Australia* (1101.0). The ABS also issues, on Tuesdays and Fridays, a *Publications Advice* (1105.0) which lists publications to be released in the next few days. The catalogue and Publications Advice are available from any ABS office.

NEW CPI PRODUCT

NOW AVAILABLE

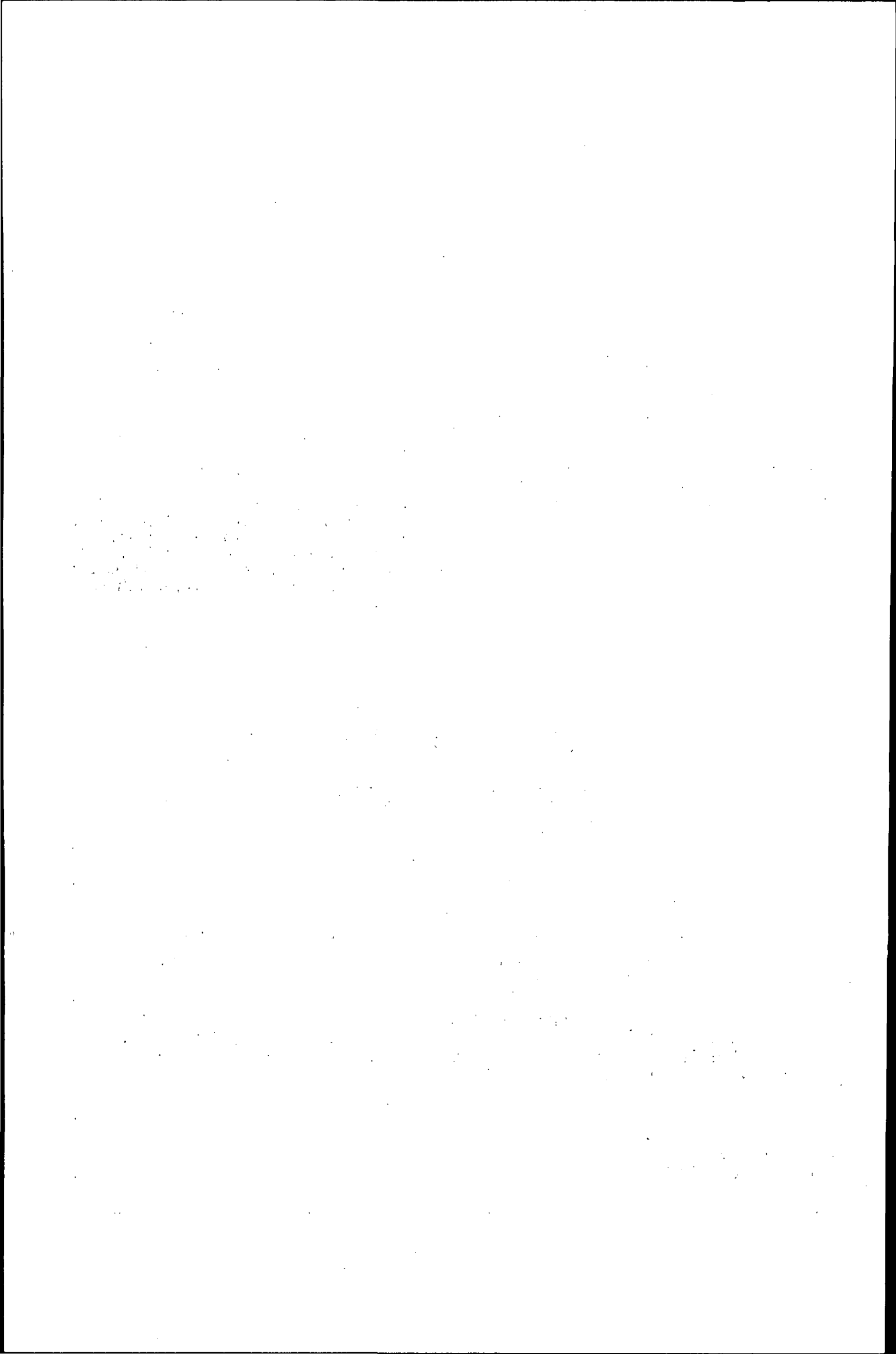
Consumer Price Index: Special Data Services

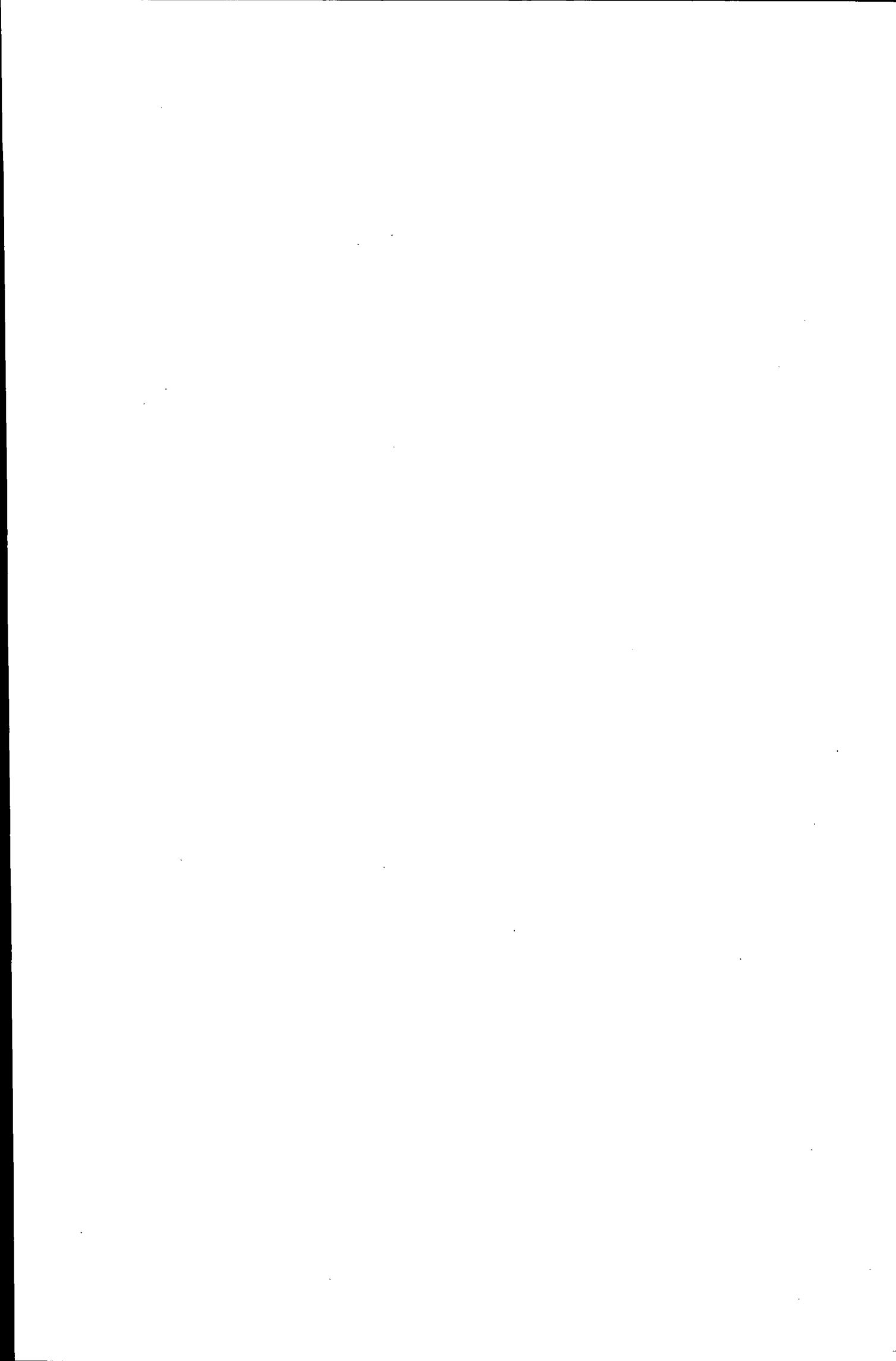
Index number series are now available for each CPI expenditure class, sub-group and group for each of the eight capital cities. This represents a total of about 1500 series with data generally available back to September quarter 1980.

The data is presented in 18 standard reports which enable the selection of series by either broad commodity groupings (e.g. all food series) or city (e.g. all CPI series for Sydney). Subscribers to this service will be able to select the report or reports which match their requirements and receive updates each quarter shortly after the release of the CPI publication.

To discuss your requirements:

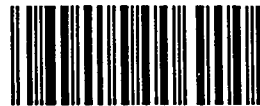
Contact Tony Davison
on Canberra (06) 252 5740





Printed by R.D. RUBIE, Commonwealth Government Printer, Canberra
© Commonwealth of Australia 1990

Recommended retail price: \$10.00



2064010006900

ISSN 1031-0207